



Large Character Ink Jet

# Marsh<sup>®</sup> Unicorn

The Unicorn is a compact, complete solution for single line case coding. Whatever your needs, the Unicorn system can be programmed quickly and easily.

Designed for customers who value quick set-up without technical intervention, one box contains everything needed to start printing with the Unicorn printer. Product names, identification numbers, automatic production counts and accurate-to-the-minute time code capabilities are available at the touch of a button. The Unicorn printer not only marks cases but also provides production information vital to inventory and quality control.



## Uptime Advantage

- Optional bulk ink supply further reduces consumable costs and extends time between ink replenishment for more efficient operation
- Customized time, date and count codes including best before/ best by date which automatically update for minimal operator interaction
- Universal voltage and built-in language selection for global use

## Built-in productivity

- Low acquisition cost to deliver on-demand case coding for nearly all simple applications
- Store messages in the controller for instant recall to reduce time to complete line changeover
- Low consumable cost keeps per item coding cost low for profitable operations

## Simple usability

- Menu-driven controller to create and edit messages
- Includes a standalone bracket, minimizing hardware integration needs
- Built-in photocells detect production direction and speed for simple integration
- Quick and simple integration; out of the box and on the job in minutes

# Marsh<sup>®</sup> Unicorn

## Large Character Ink Jet

### System includes

Controller/input device; printhead; universal power supply; mounting bracketry and starter ink kit

### Built-in software features

Customized time and date codes  
Rollover hour  
Expiration date for automatic printing of up to two distinct dates of expiration  
Shift organizer for automatic coding by particular shifts (up to 4 shifts)  
Print delay for message placement  
Character width adjustment  
Consecutive incremental numbering

### Selectable languages (Built-in)

Dutch; English; Finnish; French; German; Greek; Italian; Katakana; Portuguese; Spanish; Swedish  
Special application units include: Arabic; Chinese; Hebrew

### Print heights

Standard Print Height: 3/8 inch (10 mm)  
Optional Heights: 5/16 inch (7.9 mm); 1/2 inch (12.7 mm); 3/4 inch (20 mm)

### Character fonts

7 x 5 dot matrix, 54 printable ASCII characters  
Printable accented characters

### Conveyor line speed

20 feet/min. (6.1 m/min.) to 200 feet/min. (61.0 m/min.)

### Message length

Up to 40 characters

### Message storage capacity

Up to 52 messages

### Operating temperature range

40°F to 120°F (4°C to 49°C)

### Electrical

System uses a universal switching power supply.

### Ink system

Internally regulated ink system; factory set; no adjustment necessary  
Bulk ink available up to five gallons

### Ink

8 oz. (0.23 liter) bladder pressurized, non-aerosol ink bottle

### Shipping weight

14 lbs. (6.4 kg)

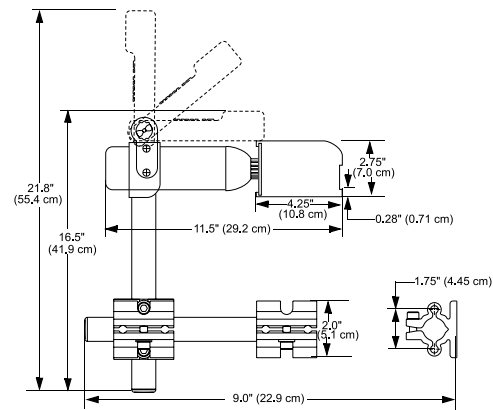
### Mounting bracketry

15 inch (38.9 cm) and 9 inch (22.8 cm) tubing with 1.0 inch (2.54 cm) outside diameter (OD)

### Optional bracketry for special installations

Long Reach Bracket Kit available for special mounting situations  
Remote Bracket Assembly Kit enables printhead to be mounted up to 20 feet (6.1 m) from controller

### Dimensions



CERTIFIED  
ISO 9001  
DOCUMENTED QUALITY



Call **800-843-3610**

Email **info@videojet.com**

or visit **www.videojet.com**

Videojet Technologies Inc.

1500 Mittel Blvd. Wood Dale IL 60191 / USA

©2014 Videojet Technologies Inc. — All rights reserved.

Videojet Technologies Inc.'s policy is one of continued product improvement. We reserve the right to alter design and/or specifications without notice.

Part No. SL000325  
Unicorn Spec Sheet-0714  
Printed in U.S.A.

