



ANSER X1

Reliable Coding Solution for
Traceability and Serialization



Hi-Res
Coding for
Traceability



Various Inks
for Coding
Applications



Easy
Operation &
Maintenance

000

001

Redefining Industrial Coding Standard

ANSER X1 is powered by our NexGen coding technology, and is capable of using different TIJ cartridge technology simultaneously, providing you with the highest coding flexibility and cost saving advantage for both primary & secondary package production line.



Robustness Beyond Ordinary Standard

Providing reliability & stability under harsh working environment



Industrial Grade Cable

Withstand up to 30kp of pull-force, preventing accidental cable disconnection



IP66 Rated Casing

Water & dust proof, allowing operation under harsh environment and water jet washdown



Industrial Grade Touch Panel

Impact & scratch resistant, protect against accidental impact during daily operation

Industry 4.0 Ready

Improving your production uptime & efficiency



Remote & Centralized Control

- + Real-time centralized control & multi-production lines monitoring
- + Support off-site remote service and technical troubleshooting



Intelligent Automation

- + Print data from ERP or MES, reduces error by manual data input
- + Production & operation analysis report, enhances factory management quality & control
- + SDK & consulting service, reduces your integration time & cost



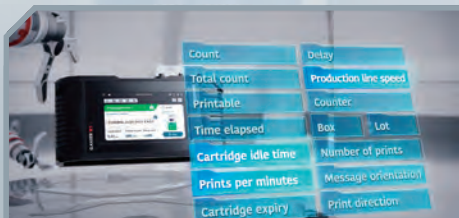
Interconnectivity with Peripheral Equipment

- + Easy collaboration with common production equipments, such as barcode scanner or check weigher
- + Multiple open wired cables available for fast & easy equipment integration



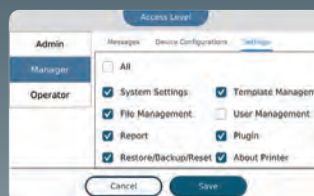
Smart & Flexible User Experience

Reducing human operation error to prevent production downtime



Real-Time Monitoring & Alert

Customizable display dashboard, with preventive notification feature to avoid production downtime



User Management System

Customizable user access level control, to reduce and eliminate operational mistakes



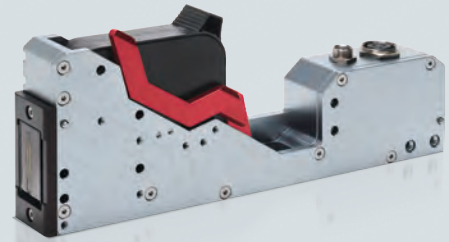
Dual-Production Line Control

Controls 2 production lines simultaneously, providing you operation efficiency and cost saving advantages

Versatile Printhead Selection

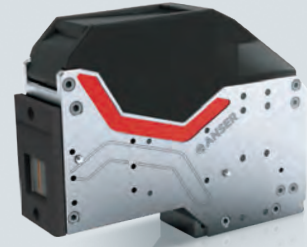
Type-H

- + Suitable for secondary package coding application
- + Single printhead with maximum 1-inch print height
- + No additional printhead required for easy switching between 0.5 & 1-inch cartridge technologies



HI-Pro

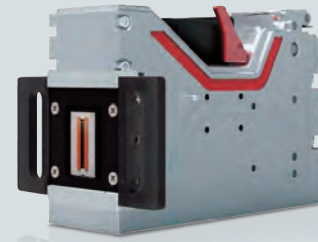
- + Suitable for primary package coding application
- + No additional printhead required for easy switching between 0.5 & 1-inch cartridge technologies
- + Flexible 90 adjustable I/O port designed for easy installation & integration in tight production space
- + Dust-proof cover designed for dusty production environment



F-Pro

* Coming Soon

- + Suitable for primary package coding application
- + Capable of coding on bottles or uneven surfaces with 10mm long throw distance
- + GMP cartridge with EU/Halah certified food grade ink solution for Food & Beverage coding application



Flexible Printhead Settings

Stitched

2-inch print height with only 2 printheads required.
Saving equipment, space and cost.



Demo Video



Parallel

Capable of replacing cartridges without production intervention, achieving true zero downtime cost.



Demo Video



Dual Technology

Capable of running 2 different TIJ cartridge technologies on 2 separate production lines simultaneously



Demo Video



3-in-1 Coding Technology

More cartridge selections, more ink solutions

HP

Technology Features

- + High-Speed & High-Resolution
- + Versatile Ink Portfolio
- + Reliable Bulk Ink System



Funai

Technology Features

- + 10mm throw distance
- + More non-porous material coverage
- + GMP certified edible ink cartridge design



IUT

Technology Features

- + Solid 1-inch cartridge design
- + Available in water/solvent based ink



Cartridge Key Features

	Print Height	Throw Distance	Print Speed	Solvent Cmpatibility	GMP
HP	0.5"	5mm	300 m/min	Mild	—
FUNAI	0.5"	10mm	300 m/min	Strong	○
IUT	1"	5mm	150 m/min	Mild	—

Ink Availability

	Water	Solvent	UV Ink	Invisible Ink	Food Grade Ink	Bulk Ink System
HP	○	○	○	○	—	○
FUNAI	—	○	—	—	○	—
IUT	○	○	—	—	—	○

X1 Controller

Maximum number of printhead	2	Display	7" Color LCD Capacitive Touchscreen (800X480 px) (Compatible with most medical & industrial gloves)
Printhead Type Support	Type H, HI-Pro, F-Pro	I/O Ports	USB 2.0 connector X 2 RS-485 & RS-232 connector X 1 RJ-45 connector X 1 Digital I/O connector (1 IN & 5 OUT pins) Encoder X 1 Photocell X 1
Printing Functions	Static Data: Text, Logo, Dynamic Data: String, Shift, Counter, Production Date, Expiration Date		
Fonts & Size	TrueType Fonts	System Language (and input lang.)	English, Spanish, German, French, Italian, Traditional Chinese, Simplified Chinese, Japanese, Korean, Russian, Portuguese, Turkish, Hungarian, Slovak, Czech, Swedish, Romanian, Serbian, Bulgarian, Polish
Barcode Type	EAN8, EAN13, EAN14, EAN128, UPCA, UPCE, CODE39, CODE128, ITF14 (SCC-14), NVE18 (SSCC-18), INTER25, CODABAR, PDF417, DATAMATRIX, QR CODE, GS1 (DATAMATRIX, DATABAR EXP, DATABAR, QR CODE), D'MATRIX 8x32, DUN14, Aztec Code		
		Dimensions & Weight	291 (L) X 142 (W) X 52 (H) mm, 2.12 kg
Communication Protocols	TCP IP/UDP, Modbus TCP, and ANSER U2 Net protocol	Power Input	AC 100V-240V, 50/60 Hz (90Watt)
IP Rating	IP66 housing	Operating Temp.	0-40°C (32°F-104°F)
		Operating RH.	0%-90%, Non-condensing

X1 Printhead

Printhead Type	Type H	HI-Pro	F-Pro
Printing Technology	High Resolution Thermal Ink Jet		
Support Cartridge	HP, IUT	HP, IUT	FUNAI
Print Height	Single Print Head: 12.7 mm (0.5 inch) or 25.4 mm (1.0 inch) Stitch Print Head: 12.7 mm X 2 @ 25 mm (0.98 inch) or 25.4 mm X 2 @ 50 mm (1.97 inch)		Single Printhead: 12.7 mm (0.5 inch) Stitch Printheads: 12.7 mm X 2 @ 24.75 mm (0.98 inch)
Print Speed	Up to 300 m/min		
Throw Distance	5 mm	5 mm	10 mm
Operating Temp.	0-40°C (32°F-104°F)		
Operating RH.	0%-90%, Non-condensing		
Dimensions	214.9 (L) X 90.8(W) X 32.2(H) mm	152.8 (L) X 104.8(W) X 39.8(H) mm	130.8 (L) X 40(W) X 96.6(H) mm
Weight	0.46 kg	0.55 kg	0.55 kg
I/O Port (* M8-4 pins)	NPN sensor input Encoder signal input		
Printhead Cables	Standard: 2 m Optional: 5 m, 10 m, 15 m		



Copyright © 2022.12 ANSER CODING INC. All rights reserved.

The information at hand is provided as available at the time of printing, and ANSER reserves the right to change any information without updating this publication.
ANSER does not assume any responsibility for any errors or omissions in this publication.



212, 212/1, 212/2 Soi Rama 2, Soi 69, Samaedam
Bangkhuntien, Bangkok 10150

www.tomco.co.th | Tel: 02-451-1330 |

